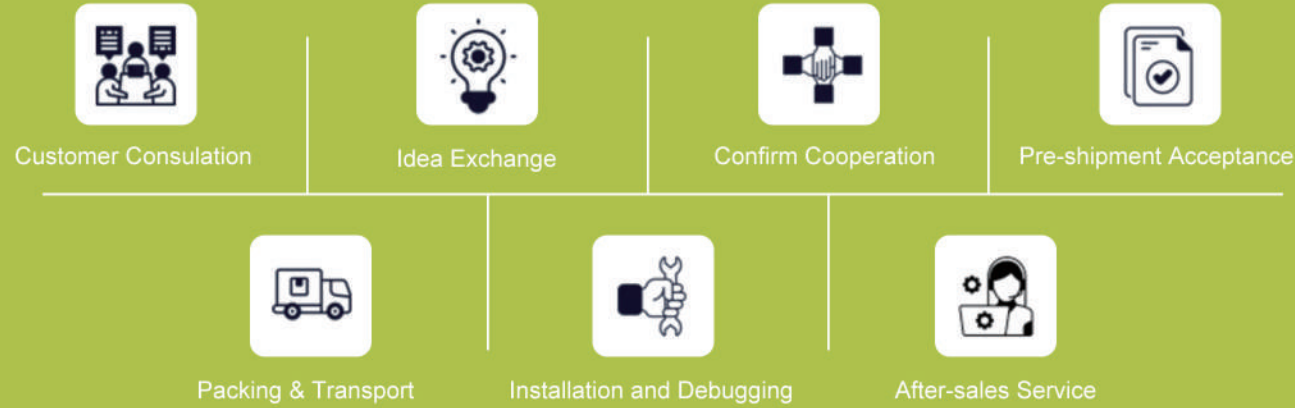


HOW WE WORK TOGETHER



FAMOUS™ 菲玛斯机械
M A C H I N E

SUZHOU FAMOUS MACHINERY CO., LTD.

Website: www.famousmachinery.com

Email: sales@famousmachinery.com

Phone: +86 18915721292

WeChat: +86 18915721292

WhatsApp: +86 18915721292

Add: Liangfeng Packaging Industrial Zone, Yangshe Town, Zhangjiagang City, Jiangsu Province, China.

PLASTIC & FOAM RECYCLING EXPERT AROUND YOU

苏州菲玛斯机械有限公司

SUZHOU FAMOUS MACHINERY CO., LTD.

REDUCE
RECYCLE
REUSE



专注固废回收设备研发制造及解决方案

www.famousmachinery.com

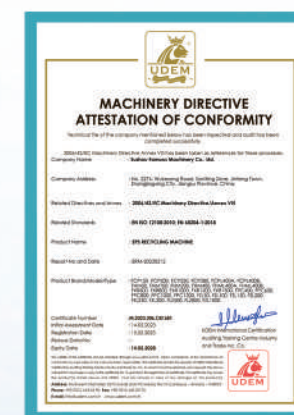
公司简介 COMPANY INTRODUCTION

苏州菲玛斯机械有限公司位于“长江黄金水道”的张家港市，距离上海浦东国际机场仅两个小时的车程。公司自成立以来，一直从事专业制造和生产各种废塑料回收设备，经过多年的潜心经营，并结合实践经验，针对不同的废料，成功研发了多种回收机型。如薄膜、编织袋、瓶片的清洗造粒，塑料撕碎机、塑料破碎机、泡沫冷压机、泡沫热熔机、泡沫造粒机等系列，产品远销日本、南非、美国、英国、加拿大、意大利、西班牙、捷克、波兰、丹麦、挪威、瑞典等多个国家和地区。

多年来根据客户的反馈和意见，我们对设备不断改进和创新，为国内外客户提供最完善的解决方案和服务价值。苏州菲玛斯机械热忱欢迎您的来访！

Suzhou Famous Machinery Co., Ltd. is located in Zhangjiagang City, on the "Golden Waterway of the Yangtze River," just two-hour drive from Shanghai Pudong International Airport. Since its establishment, the company has been professionally manufacturing and producing various waste plastic recycling equipment. Through years of dedicated operation and practical experience, it has successfully developed a variety of recycling machines for different types of waste materials. Our products include a range of machines for washing and granulating films, woven bags, and bottles; plastic shredders; plastic crushers; foam compactors; foam melting machines; and foam pelletizers. These products are exported to Japan, South Africa, the United States, the United Kingdom, Canada, Italy, Spain, the Czech Republic, Poland, Denmark, Norway, Sweden, and many other countries.

Over the years, based on customer feedback and opinions, we have continuously improved and innovated our equipment to provide domestic and international customers with the most comprehensive solutions and service value. Suzhou Famous Machinery Company warmly welcomes your visit!



PP PE清洗生产线 PP PE WASHING LINE



设备特性

MACHINERY FEATURES

废塑料薄膜和编织袋是非常重要的回收资源，薄膜和编织袋清洗之后可用于后续的造粒再生，做成不同的塑料制品。除此之外，PP PE硬料像牛奶瓶、食物包装盒、洗发水瓶、塑料桌椅、塑料筐、塑料托盘、塑料管材等都有巨大的回收市场，由于物料的不同状态和污染程度，我们可以为每个客户定制适合的清洗回收生产线。

Waste plastic film and woven bags are important recyclable resources, and usually recycled plastic film and woven bags need to be pelletized before reproducing into plastic products. In addition to PP PE soft material recycling, PP PE rigid plastic recycling is also a huge market. The plastic products in our daily use like milk bottles, food packaging boxes, shampoo bottles, plastic chairs, plastic tables, plastic basket, plastic pallets, and plastic pipes, etc. are all PP PE rigid materials.

Due to different status and dirty degree of film and woven bags, we provide customized and suitable machinery to customers.

主要技术参数

MAIN TECHNICAL PARAMETERS

型号 Model	产量 Capacity	耗电量 Power Consumption	热洗锅 Hot Washing	耗水量 Water Supply(can be recycled)	人工 Manpower	占地 Area Required
QX-300	300 kg/hr	70 kw/h	Optional	4-5 m3/hr	2-3 Person	30*4*5 m
QX-500	500 kg/hr	140 kw/h	Optional	6-8 m3/hr	2-3 Person	40*4*5 m
QX-1000	1000 kg/hr	280 kw/h	Optional	8-10 m3/hr	3-4 Person	55*6*6 m

By using water treatment system, our recycling line can be used recycled water.

以上参数仅供参考，根据客户不同要求，设备配置参数会有所调整。
The parameters for reference only, it may change according to different configuration.

辅助机械

AUXILIARY MACHINE



塑料挤干机 PLASTIC SQUEEZER MACHINE



设备特性

MACHINERY FEATURES

- 该机器采用螺旋挤压脱水设计；
- 整机为西门子PLC控制；
- 本机主要用于塑料薄膜、塑料袋、编织袋、吨包袋、塑料瓶等物料的脱水干燥，替代了传统回收清洗生产线中的脱水机和热风干燥机，能耗低且脱水效率更佳。
- This machine adopts a screw extrusion pressing dewatering design;
- The entire machine is controlled by Siemens PLC;
- This machine is mainly used for dewatering and drying plastic films, plastic bags, woven bags, ton bags and plastic bottles, replacing the dewatering machines and hot air dryers in traditional recycling and washing lines. It has lower energy consumption and better dewatering efficiency.

主要技术参数

MAIN TECHNICAL PARAMETERS

Items	JG380	JG500
电机功率 Motor power	22kw	30-37kw
螺旋直径 Screw diameter	380mm	500mm
转速 Speed	45r/min	45r/min
进料口尺寸 Input size	800*700mm	1000*800mm
液压电机 Hydraulic station motor	2.2kw	3-4kw
产量 Capacity	300-500kg/h (depends on different material condition)	500-1000kg/h (depends on different material condition)
电器控制 Electric control	PLC (Siemens)	PLC (Siemens)
机器尺寸 Machine size	3500*1100*2000mm	4000*1300*2000mm

以上参数仅供参考，根据客户不同要求，设备配置参数会有所调整。
The parameters for reference only, it may change according to different configuration.

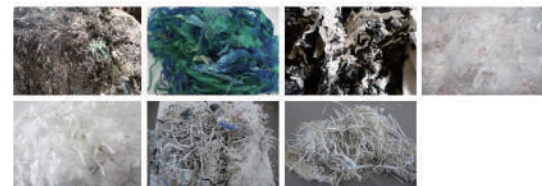
辅助机械

AUXILIARY MACHINE



塑料挤干切粒机 PLASTIC SQUEEZING PELLETIZER MACHINE

Materials before process



Materials after process



设备特性

MACHINERY FEATURES

- 这款塑料挤干切粒机主要用于清洗后的薄膜、塑料袋、编织袋、吨包袋等物料，并将其制成半塑化颗粒。该半塑化颗粒可直接进入后面的造粒机做成更小的成品颗粒，并大大提高后续造粒机的产量。
- 设备采用螺旋挤压和电加热方式，使物料干燥度高、塑化度高，产量高能耗低。
- 最终产品的含水量约3%左右。
- This plastic squeezing pelletizer machine is mainly used for washed materials such as films, plastic bags, woven bags, and ton bags, and then processing them into semi-plasticized granules. These semi-plasticized granules can be directly fed into a subsequent pelletizer to make even smaller finished pellets, significantly increasing the output of the pelletizer machines.
- The equipment uses screw extrusion pressing and electric heating, resulting in high material dryness, high plasticity, high output, and low energy consumption.
- The final product has a moisture content of approximately 3%.

主要技术参数

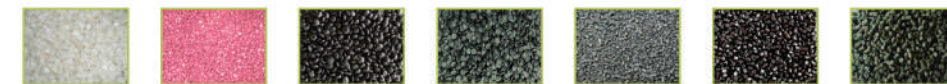
MAIN TECHNICAL PARAMETERS

Items	JR300	JR320	JR350	JR380
电机功率 Motor power	75-90kw	110-132kw	160-185kw	185-200kw
螺旋直径 Screw diameter	300mm	320mm	350mm	380mm
切粒电机 Cutting motor power	4kw	4kw	5.5kw	7.5kw
风机 Blower motor power	5.5kw	5.5kw	7.5kw	7.5kw
产量 Capacity	300-400kg/h	400-600kg/h	600-800kg/h	800-1000kg/h
电器控制 Electric control	PLC (Siemens)	PLC (Siemens)	PLC (Siemens)	PLC (Siemens)

以上参数仅供参考，根据客户不同要求，设备配置参数会有所调整。
The parameters for reference only, it may change according to different configuration.

PP PE薄膜&编织袋造粒生产线

PP PE FILM&WOVEN BAG PELLETIZING LINE



设备特性

MACHINERY FEATURES

该造粒生产线配有切割压实仓，可适用于大块的薄膜和编织袋直接进料。经过压实仓的高速摩擦生热，物料进入挤出螺杆高温塑化，再通过水环切粒或者拉条切粒形成颗粒状。

As our pelletizing line is equipped with special cutter compactor, pp pe film and woven bags in big size can be directly fed into our pelletizing line to produce pp pe granules.
Customer can choose water ring pelletizing or noodle pelletizing method.
Single stage or double stage pelletizing is optional too.

主要技术参数

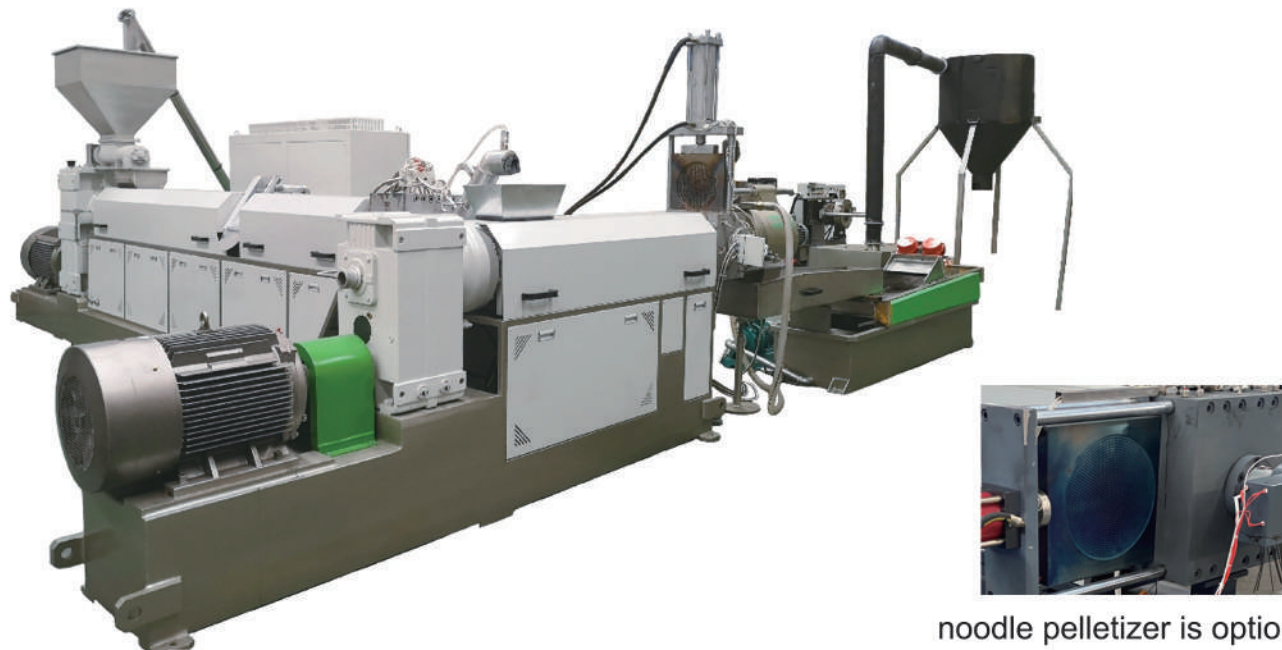
MAIN TECHNICAL PARAMETERS

型号 Model	产量 Capacity	压实仓电机功率 Cutter Compactor Motor Power	第一阶挤出机电机功率 First Stage Motor Power	第二阶挤出机电机功率 Second Stage Motor Power	切粒方式 Pelletizing Method
SJ 85/85	100-150kg/h	37-45	55	15	water ring or noodle pelletizer
SJ 100/100	150-200kg/h	45-55	90	30	
SJ 130/130	300-400kg/h	75-90	132	45	
SJ 160/160	500-600kg/h	90-110	160	55	
SJ 180/200	800-1000kg/h	132-160	200	75	

以上参数仅供参考，根据客户不同要求，设备配置参数会有所调整。
The parameters for reference only, it may change according to different configuration.

硬料造粒线

PP PE RIGID PLASTIC PELLETIZING LINE



noodle pelletizer is optional

设备特性

MACHINERY FEATURES

我们的硬料造粒生产线不仅适用于PP PE的硬料，也适用于ABS, PS等片料。

Our PP PE rigid plastic pelletizing line works not only for pp pe rigid material, but also for other rigid material such as ABS, PS, etc.

Customer can choose water ring pelletizing or noodle pelletizing method.

Single stage or double stage pelletizing is optional too.

主要技术参数

MAIN TECHNICAL PARAMETERS

型号 Model	产量 Capacity	第一阶挤出机电机功率 First Stage Motor Power	第二阶挤出机电机功率 Second Stage Motor Power	切粒方式 Pelletizing Method
SJ 100/100	100-200kg/h	75-90	30	water ring or noodle pelletizer
SJ 130/130	300-400kg/h	110-132	45	
SJ 160/160	500-600kg/h	132-160	55	
SJ 180/200	800-1000kg/h	185-200	75	

以上参数仅供参考，根据客户不同要求，设备配置参数会有所调整。

The parameters for reference only, it may change according to different configuration.

单轴撕碎机

SINGLE SHAFT SHREDDER



设备特性

MACHINERY FEATURES

- 单轴撕碎机由电机，减速机，刀轴，刀片，机架，箱体，油压缸，油泵等主要结构组成。
- 方块刀头设计：可多角度多次使用，更换方便。使用寿命久，撕碎能力强，产量高。
- 液压推料：可根据物料不同，自行调整推料速度。
- PLC程序控制：采用自主研发的PLC程序控制机器运行，可自动正反转，使机器运行更加可靠稳定。
- 自动化程度高，生产效率高，能使用户经济有效的回收大口径废塑料，管材和机头料。
- 适用物料：各种废塑料，废木材，废旧纸张等。

- The single shaft shredder consists of a motor, reducer, rotor, blades, frame, hydraulic cylinder, and oil pump, etc.
- Square knife design: Can be used multiple times at multiple angles, easy to replace. Long service life, strong shredding capacity, and high production output.
- Hydraulic pushing: The pushing speed can be adjusted according to different materials.
- PLC program control: Use PLC program to control machine operation, enabling automatic forward and reverse rotation, making machine operation more reliable and stable.
- Automatic and high production efficiency, enabling users to economically and effectively recycle waste plastics, films, bags, pipes, bottles, buckets, pallets and lump materials, etc.
- Applicable materials: Various waste plastics, waste wood, waste paper, etc.

主要技术参数

MAIN TECHNICAL PARAMETERS

型号 Model	电机功率 Motor (kw)	转子直径 Diameter of rotor (mm)	转速 Speed (rpm)	动刀 Rotating Knife (pcs)	定刀 Fixed Knife (pcs)	液压站功率 Hydraulic power (kw)	重量 Weight (kg)
XR600	22	Φ300	82	33	1	2.2	2300
XR800	37	Φ400	85	56	2	3	3800
XR1000	55	Φ460	87	64	2	5.5	4500
XR1200	75	Φ460	87	72	2	7.5	6500
XR1500	90-110	Φ460	87	88	3	11	8000

以上参数仅供参考，根据客户不同要求，设备配置参数会有所调整。

The parameters for reference only, it may change according to different configuration.

单轴撕碎破碎一体机

SINGLE SHAFT SHREDDER AND CRUSHER TWO IN ONE MACHINE



设备特性

MACHINERY FEATURES

- PLC程序控制，自动化程度高。
- 单轴撕碎机和破碎机组合结构，省去中间输送环节。
- 占地面积小，操作简单。
- 适用物料：中空吹塑物料，塑料容器等。
- PLC program control.
- Combined structure of single shaft shredder and crusher, eliminating intermediate conveyor.
- Saving required area and simple operation.
- Applicable materials: hollow blow molded materials, plastic containers & PP or PE plastic lumps.

主要技术参数

MAIN TECHNICAL PARAMETERS

型号 Model	XRU600	XRU800
撕碎机电机功率 Shredder motor power	22kw	45kw
破碎机电机功率 Crusher motor power	18.5kw	30kw
撕碎机转子直径 Shredder rotor diameter	280mm	400mm
破碎机转子直径 Crusher rotor diameter	320mm	380mm
撕碎室尺寸 Chamber size	600*600mm	800*800mm
液压站功率 Hydraulic power	2.2kw	3kw
外形尺寸 Dimension	2500*1800*2400mm	2900*2000*2500mm
重量 Weight	3600kg	5000kg

以上参数仅供参考，根据客户不同要求，设备配置参数会有所调整。
The parameters for reference only, it may change according to different configuration.

单轴撕碎破碎生产线

SINGLE SHAFT SHREDDER AND CRUSHER LINE



设备特性

MACHINERY FEATURES

- PLC程序控制。
- 整机系统符合CE安全标准。
- 独立智能化控制柜。
- 一键启动，自动化程度高。
- 适用物料：塑料块料，打包中空塑料瓶，塑料管材等。
- PLC program control.
- The whole system complies with CE safety standards.
- Independent and Intelligent control cabinet.
- One-click start, Highly automated.
- Applicable materials: plastic lumps, bottle or film balers, plastic pipes, etc.

主要技术参数

MAIN TECHNICAL PARAMETERS

型号 Model	SNC600	SNC800	SNC1000	SNC1200
撕碎机电机功率 Shredder motor power	22kw	45kw	55kw	75kw
破碎机电机功率 Crusher motor power	22kw	45kw	55kw	75kw
输送机电机 Conveyor motor power	1.5kw	2.2kw	3kw	3kw

以上参数仅供参考，根据客户不同要求，设备配置参数会有所调整。
The parameters for reference only, it may change according to different configuration.

双轴撕碎机

DOUBLE SHAFT SHREDDER



设备特性

MACHINERY FEATURES

- PLC程序控制。设启动，停止，超载自动反转控制功能。
- 双轴撕碎机具有大扭矩、低转速、低噪音、高效率等优点。
- 刀片采用高强度耐磨金属材料制作。
- 针对不同物料可以使用不同厚度及爪数的刀片。
- 适合撕碎体积大、高强度的塑料，如汽车外壳，轮胎，木材，金属桶，大型废旧家电，废铝，生活垃圾及工业废弃物等。
- PLC program control. Includes start, stop, and automatic overload reverse functions.
- The double shaft shredder features high torque, low speed, low noise, and high efficiency.
- Blades are made of high-strength, wear-resistant metal.
- Blades of different thicknesses and numbers of claws can be used for different materials.
- Suitable for shredding large, high-strength plastics, such as car shells, metal drums, large waste appliances, scrap aluminum, household waste, and industrial waste.

主要技术参数

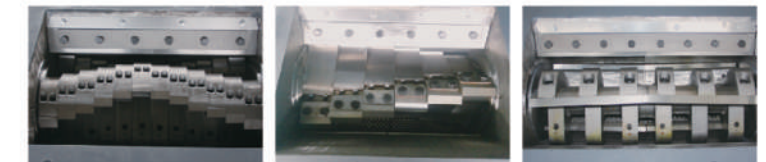
MAIN TECHNICAL PARAMETERS

型号 Model	电机功率 Motor power (kw)	刀轴直径 Diameter of rotor(mm)	转速 Speed (rpm)	动刀 Rotating Knife (pcs)	定刀 Fixed Knife (pcs)	爪数 Hooks	重量 Weight (kg)
FXD600	11+11	Φ280	16	20	20	5-13	2850
FXD800	15+15	Φ280	16	20	20	5-13	3400
FXD1000	22+22	Φ400	16	20	20	5-21	4500
FXD1200	37+37	Φ440	16	24	24	5-21	7600
FXD1500	55+55	Φ500	16	30	30	5-21	11500

以上参数仅供参考，根据客户不同要求，设备配置参数会有所调整。
The parameters for reference only, it may change according to different configuration.

XRC 系列小破碎机

XRC SERIES CRUSHER



claw blades type

flat blades type

slicing blades type

设备特性

MACHINERY FEATURES

- 内部精细打磨处理。
- 体积小，产量高。
- 针对不同物料采用不同刀架。
- 刀片采用优质锻打钢材制作。
- 适用物料：不同种类塑料（塑料型材片材、PET 瓶）、中空容器、注塑过程中产生的废料。
- Internal fine grinding finish.
- Small size, high output.
- Different blade holders for different materials.
- Blades made of high-quality forged steel.
- Applicable material: different kinds of plastics (plastic profiles&sheets, pet bottles), hollow containers, waste generated during injection molding.

主要技术参数

MAIN TECHNICAL PARAMETERS

型号 Model	XRC400	XRC500	XRC600	XRC800
电机功率 Motor power(kw)	7.5	11	15	22
转速 Rotor speed(rpm)	500-600	500-600	500-600	500-600
动刀 Rotating knives(pcs)	6	6	6	6
	12	15	18	24
	24	30	30	42
定刀 Fixed knives(pcs)	2	2	4	4
破碎室尺寸Crushing chamber size(mm)	370*400mm	370*500mm	480*600mm	480*800mm
可选配风机功率 Optional Blower motor power(kw)	2.2	2.2	3	3
产量 Capacity(kg/h)	100-200	150-300	200-400	500-800
机器尺寸 Machine size(mm)	1420*920*1410	1420*1020*1410	1760*1170*1840	1760*1370*1840
机器重量 Machine weight(kg)	620	720	1100	1295

以上参数仅供参考，根据客户不同要求，设备配置参数会有所调整。
The parameters for reference only, it may change according to different configuration.

FHC系列大型破碎机 FHC SERIES CRUSHER



设备特性

MACHINERY FEATURES

- 液压打开破碎腔和液压换网设计。
- 刀片采用优质锻打钢材制作。
- 轴承外置，减少粉尘进入。
- 整机系统符合CE安全标准。
- 配独立控制电柜。
- 适用物料：大件废塑料（大型塑料片材&塑料型材，塑料大桶），中空容器、注塑过程中产生的废料。
- Hydraulically opened crushing chamber and hydraulic screen changing design.
- Blades are made of high-quality forged steel.
- Externally mounted bearings reduce dust entry.
- The entire system complies with CE safety standards.
- Equipped with an independent control cabinet.
- Applicable materials: Large waste plastics (large plastic sheets & profiles, large plastic drums, bottles, barrels, buckets), hollow containers and waste generated during injection molding.

主要技术参数

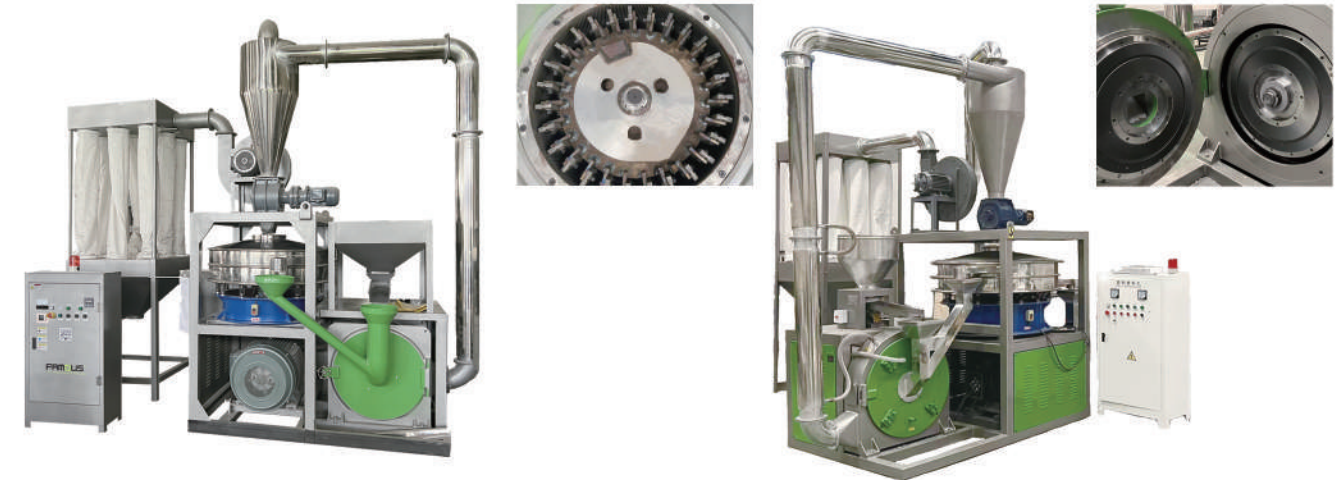
MAIN TECHNICAL PARAMETERS

型号 Model	FHC600/450	FHC800/450	FHC800/600	FHC1000/600	FHC1200/600	FHC1200/800
转子旋转直径 Rotor revolving diameter (mm)	450	450	600	600	600	800
转速 Rotor speed(rpm)	580	580	520	520	520	480
动刀 Rotating knives(pcs)	2x3	2x3	2x5/2x7	2x5/2x7	2x5/2x7	2x7
定刀 Fixed knives(pcs)	2	4	4	4	4	4
电机功率 Motor power (kw)	30	37	55	55/75	75/90	132
液压站功率 Hydraulic motor(kw)	1.1	1.5	1.5	1.5	1.5	3
筛网尺寸 Mesh screen (mm)	10-50	10-50	10-50	10-50	10-50	12-50
进料口尺寸 Feeding opening size (mm)	530x600	530x800	705x800	800x1000	850x1200	1200x1200
外形尺寸 Size(L*W*H) (mm)	2000x1550x2550	2000x1750x3150	2100x1750x3200	2300x1950x3350	2300x2150x3350	3200x2400x4500
重量 Weight (kg)	2600	3100	3500	4500	5500	9500

以上参数仅供参考，根据客户不同要求，设备配置参数会有所调整。
The parameters for reference only, it may change according to different configuration.

辅助机械

AUXILIARY MACHINE



塑料磨粉机 PLASTIC PULVERIZER MACHINE

设备特性

MACHINERY FEATURES

- 塑料磨粉机主要由电动机、磨盘、风机、振动筛、除尘系统等组成。
- 结构简单，易于安装和维护。
- 配备集尘装置，有效减少粉尘污染。
- 主机的门盖可以打开，方便维修和更换刀具。
- 磨粉机采用水冷和风冷双冷却系统，以防止轴承等零件过热。
- 该塑料磨粉机可处理PVC, EPS, PE, LLDPE, LDPE等各种软硬片料和块料。
- The plastic pulverizer mainly consists of a main motor, grinding disc, blower, vibrating screen, and dust collection system.
- It has a simple structure, making it easy to install and maintain.
- Equipped with a dust collection device, it effectively reduces dust pollution.
- The main machine's door can be opened for convenient maintenance and blade replacement.
- The grinding mill adopts a dual cooling system of water cooling and air cooling to prevent overheating of bearings and other parts.
- This plastic pulverizer can process various soft&hard flakes and lumps such as PVC, EPS, PE, HDPE, LDPE, and LLDPE, etc.

主要技术参数

MAIN TECHNICAL PARAMETERS

型号 Model	SMF-400	SMF-500	SMF-600	SMF-800
主电机 Main Motor power (kw)	22-30	37-45	45-55	75-90
磨盘直径 Grinding disc diameter	about 400mm	about 500mm	about 600mm	about 800mm
产量 Capacity	50-100	100-200	200-400	300-500
管道 Material of conveying pipe	stainless steel			
筛网 Mesh screen	20-100mesh (can be adjusted according to customer request)			
冷却方式 Cooling type	wind cooling +water cooling			

以上参数仅供参考，根据客户不同要求，设备配置参数会有所调整。
The parameters for reference only, it may change according to different configuration.

泡沫热熔机

FOAM MELTING MACHINE

设备特性

MACHINERY FEATURES

- 产能范围: 50-200kg/小时
- 压缩比: 约90:1
- 处理对象: EPS发泡聚苯乙烯、EPS餐盒、EPS粉尘、XPS保温板、EPE发泡聚乙烯、EPP发泡聚丙烯等
- Capacity Range: 50-200 kg/hour
- Compression Ratio: about 90:1
- Applicable materials: EPS expanded polystyrene, EPP expanded polypropylene, etc.

机器型号

MACHINE MODEL



主要技术参数

MAIN TECHNICAL PARAMETERS

型号 Model	FHM100A or FHM100B	FHM200	FHM400
进料口尺寸 Feeding size	560*400mm	900*600mm	1000*900mm
螺旋直径 Screw diameter	φ138 mm	φ190-120 mm	φ190-120 mm
螺旋转速 Screw speed	150 r/min	110 r/min	110 r/min
加热功率 Heating power	5kw	20kw	20kw
主电机 Main motor power	7.5kw	15kw	22kw
破碎电机 Crusher motor power	3kw	3kw*2sets	3kw*4sets
破碎刀片 Crusher blades quantity	about 9sets	about 18sets	about 36sets
重量 Machine weight	800kg	1500kg	2200kg
产量 Capacity	40-50kg/h	80-100kg/h	150-200kg/h

以上参数仅供参考, 根据客户不同要求, 设备配置参数会有所调整。
The parameters for reference only, it may change according to different configuration.

泡沫冷压机

FOAM COMPACTOR MACHINE

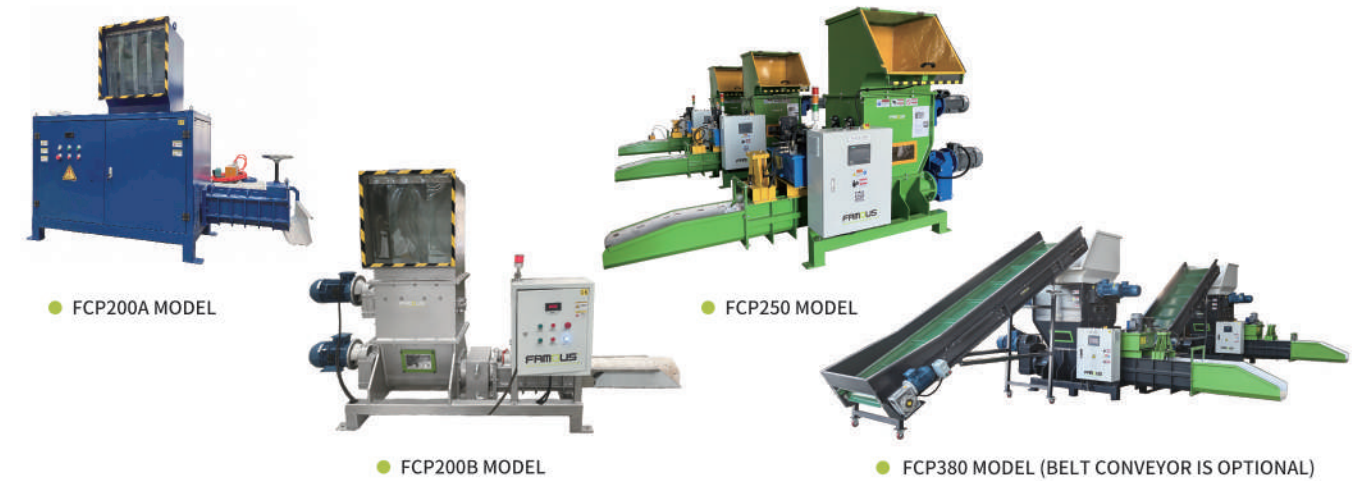
设备特性

MACHINERY FEATURES

- 产能范围: 50-200kg/小时
- 压缩比: 约50:1
- 处理对象: EPS发泡聚苯乙烯、EPS餐盒、EPS粉尘、XPS保温板、EPE发泡聚乙烯、EPP发泡聚丙烯等
- Capacity Range: 50-200 kg/hour
- Compression Ratio: about 50:1
- Applicable materials: EPS expanded polystyrene, EPP expanded polypropylene, etc.

机器型号

MACHINE MODEL



主要技术参数

MAIN TECHNICAL PARAMETERS

型号 Model	FCP200A or FCP200B	FCP250	FCP380
螺旋直径 Screw diameter	Φ180mm	Φ240mm	Φ350mm
进料口尺寸 Feeding size	560mmx400mm	900mmx600mm	1000mmx900mm
螺旋转速 Screw speed	36rpm	42rpm	42rpm
破碎刀片 Crusher blades	about 9sets	about 18sets	about 36sets
主电机 Main motor power	4kw	11kw	15kw
破碎电机 Crusher motor power	3kw	3kw*2sets	3kw*4sets
液压电机 Hydraulic motor	No	1.5kw	2.2kw
出料尺寸 Production size	200x200mm	250x250mm	380*380mm
重量 Machine weight	1000kg	1500kg	2500kg
产量 Capacity	40-50kg/h	80-100kg/h	150-200kg/h

以上参数仅供参考, 根据客户不同要求, 设备配置参数会有所调整。
The parameters for reference only, it may change according to different configuration.

泡沫热熔生产线

FOAM HOT MELTING PRODUCTION LINE



after hot melting



smoke exhaust device optional

设备特性

MACHINERY FEATURES

该热熔生产线采用输送带喂料，经破碎刀破碎后，通过风机送到大料仓缓存。采用分体式设计来提高出料产量的泡沫热熔块解决方案。主要用于大型回收中心，大型海鲜食品加工中心，以及城市分拣中心。

The foam hot melting production line uses a belt conveyor for materials feeding, and after being crushed by crusher, the material is sent to a large hopper for buffering via a blower. It adopts a split-type design to increase output in foam hot melting solution. It is mainly used in large-scale recycling centers, large-scale seafood processing centers, and city sorting centers.

主要技术参数

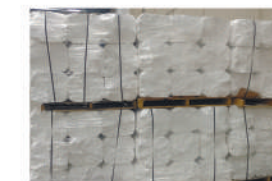
MAIN TECHNICAL PARAMETERS

型号 Model	FHML400
螺旋直径 Screw diameter	φ200mm
进料口尺寸 Feeding size	1000mmx900mm
螺旋转速 Screw speed	110rpm
破碎刀片 Crusher blades	about 36sets
刀片转速 Blade rotation speed	120rpm
输送电机 Conveyor motor power	1.5kw
主电机 Main motor power	22kw
破碎电机 Crusher motor power	3kw*4sets
风机 Blower motor power	5.5kw
加热功率 Heating power	about 20kw
产量 Capacity	200-300kg/h
外形尺寸 Size L*W*H	6060x6000x4090mm

以上参数仅供参考，根据客户不同要求，设备配置参数会有所调整。
The parameters for reference only, it may change according to different configuration.

泡沫冷压生产线

FOAM COLD COMPACTING PRODUCTION LINE



after cold compacting



hydraulic cutter is optional

设备特性

MACHINERY FEATURES

该冷压生产线采用输送带喂料，经破碎刀破碎后，通过风机送到大料仓缓存。采用分体式设计来提高出料产量的泡沫冷压块解决方案。主要用于大型回收中心，大型海鲜食品加工中心，以及城市分拣中心。

The foam cold compacting production line uses a belt conveyor for materials feeding, and after being crushed by crusher, the material is sent to a large hopper for buffering via a blower. It adopts a split-type design to increase output in foam cold compacting solution. It is mainly used in large-scale recycling centers, large-scale seafood processing centers, and city sorting centers.

主要技术参数

MAIN TECHNICAL PARAMETERS

型号 Model	FCPL380
螺旋直径 Screw diameter	φ350mm
进料口尺寸 Feeding size	1000mmx900mm
螺旋转速 Screw speed	42rpm
破碎刀片 Crusher blades	about 36sets
刀片转速 Blade rotation speed	120rpm
主电机 Main motor power	15kw
破碎电机 Crusher motor power	3kw*4sets
液压电机 Hydraulic motor	2.2kw
出料尺寸 Production size	380*380mm
产量 Capacity	200-300kg/h
重量 Machine weight	3000kg

以上参数仅供参考，根据客户不同要求，设备配置参数会有所调整。
The parameters for reference only, it may change according to different configuration.

泡沫液压生产线

FOAM HYDRAULIC COMPACTOR LINE WITH SILO SYSTEM



设备特性

MACHINERY FEATURES

- 泡沫液压生产线采用两段式液压压缩，可以将物料压缩至更高密度，约300-400kg/m³。
- 更容易堆放，运送效率更高。
- The foam hydraulic compactor line uses a two-stage hydraulic compression system, which can compress materials to a higher density, approximately 300-400 kg/m³.
- This makes them easier to stack and increases transportation efficiency.

主要技术参数

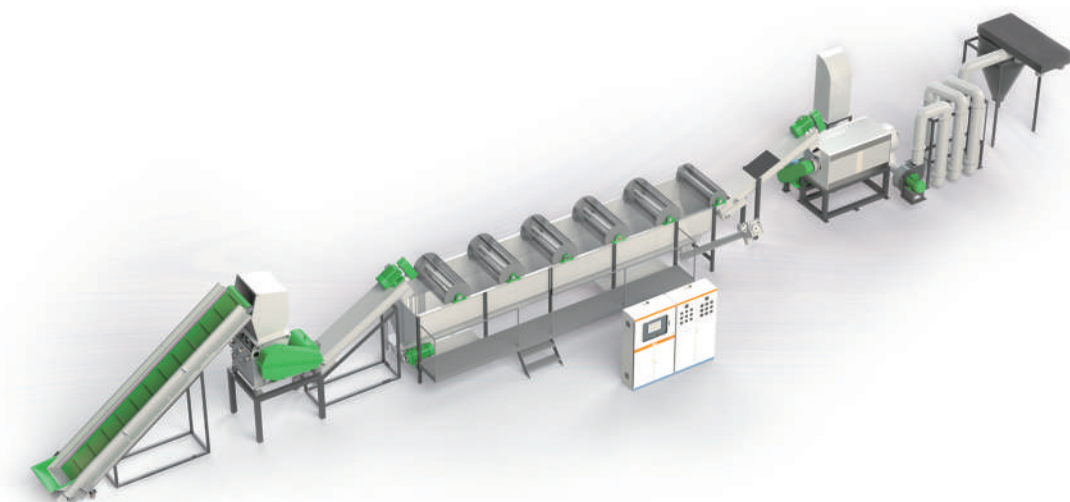
MAIN TECHNICAL PARAMETERS

型号 Model	FCPL400
螺旋直径 Screw diameter	Φ350mm
进料口尺寸 Feeding size	1000mmx900mm
螺旋转速 Screw speed	42rpm
破碎刀片 Crusher blades	about 36sets
刀片转速 Blade rotation speed	120rpm
主电机 Main motor power	11-15kw
破碎电机 Crusher motor power	3kw*4sets
液压电机 Hydraulic motor	15-18.5kw
出料尺寸 Production size	400*400mm
产量 Capacity	200-300kg/h
重量 Machine weight	3500kg

以上参数仅供参考，根据客户不同要求，设备配置参数会有所调整。
The parameters for reference only, it may change according to different configuration.

泡沫清洗线

FOAM WASHING LINE



设备特性

MACHINERY FEATURES

因泡沫塑料在包装和农业领域的广泛应用，导致每天都会产生大量的受污染泡沫废料。尽管这些泡沫塑料污染严重，但仍然可以回收利用。

菲玛斯机械自主研发的泡沫清洗线是一套泡沫破碎清洗干燥回收系统，首先处理受污染的泡沫废料。废料会被粉碎成小碎片，然后清洗、干燥，最终可压块或造粒等。

The widespread use of polystyrene foam in packaging and agriculture generates a large amount of contaminated foam waste daily. Despite this significant pollution, the foam is still recyclable.

The foam washing line developed by us is a complete foam crushing, washing, drying, and recycling system that processes the contaminated foam waste. The waste is crushed into small fragments, then washed, dried, and finally compressed into blocks or making granules.

工作原理

WORKING PRINCIPLE

- 破碎：将泡沫废料破碎成更小的碎片。
- 清洗：彻底清洗碎片，去除污垢、油渍和其他污染物。
- 干燥：去除多余水分，使材料可以进行进一步的回收或再利用。
- Crushing: Crush the foam waste into smaller fragments.
- Washing: Removing dirt, oil, and other contaminants in washing progress.
- Drying: Remove moisture, make the material to be further recycled or reused.

主要技术参数

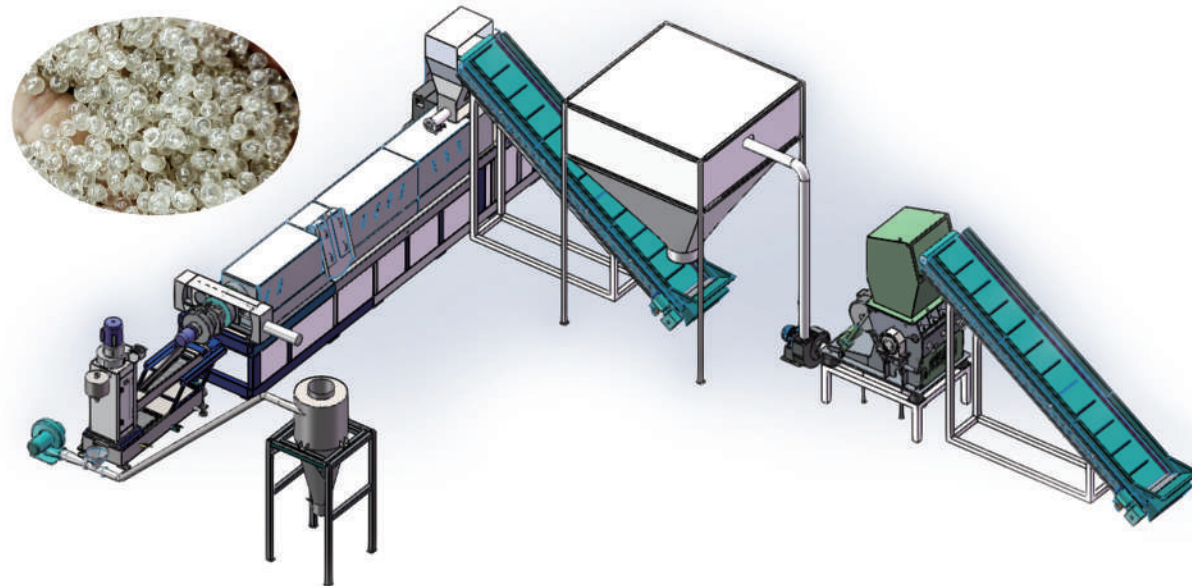
MAIN TECHNICAL PARAMETERS

型号 Model	产量 Capacity	耗电量 Power Consumption	热洗 Hot Washing	耗水量 Water Supply (can be recycled)	人工 Manpower	占地 Area Required
QXF-300	200-300 kg/hr	70 kw/h	Optional	4-5 m ³ /hr	2-3 Person	30*4*5 m

以上参数仅供参考，根据客户不同要求，设备配置参数会有所调整。
The parameters for reference only, it may change according to different configuration.

泡沫造粒线

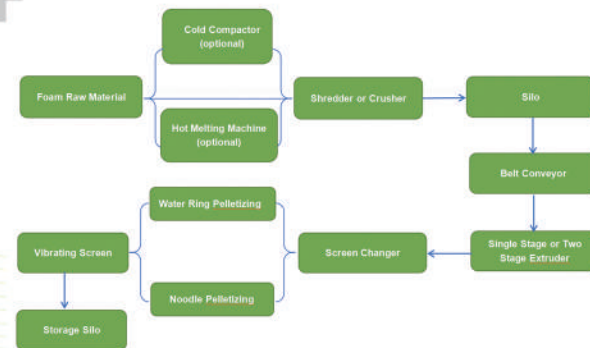
FOAM PELLETIZING LINE



设备特性

MACHINERY FEATURES

- 该生产线主要是由皮带输送机、挤出机、换网器、切粒模头、冷却系统，风送料仓和电器系统组成。适用原料：EPS/XPS/EPE/EPP/PS等泡沫料及其冷压块料和热熔块料。
- This pelletizing line mainly consists of a belt conveyor, extruder, screen changer, pelletizing type, cooling system, air blower, silo and electrical system.
- Applicable raw materials: EPS/XPS/EPE/EPP/PS foam materials, as well as cold-pressed and hot-melt blocks.



主要技术参数

MAIN TECHNICAL PARAMETERS

型号 Model	SJ120	SJ130
螺杆直径 Screw diameter(mm)	Φ120	Φ130
长径比 L/D	28:1	28:1
主机功率 Main extruder motor power(kw)	90	110
产量 Capacity	200kg/h	300kg/h

以上参数仅供参考，根据客户不同要求，设备配置参数会有所调整。
The parameters for reference only, it may change according to different configuration.

包装和发货

PACKAGING AND SHIPPING



Shipping to USA customer



Shipping to Indonesia customer



Shipping to Czech customer



Shipping to Saudi customer



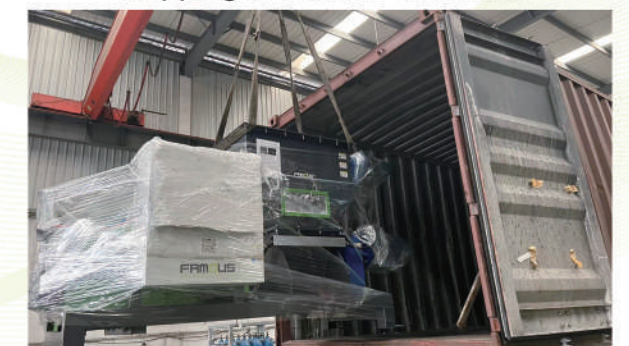
Shipping to UK customer



Shipping to Danish customer



Shipping to Greek customer



Shipping to Spanish customer